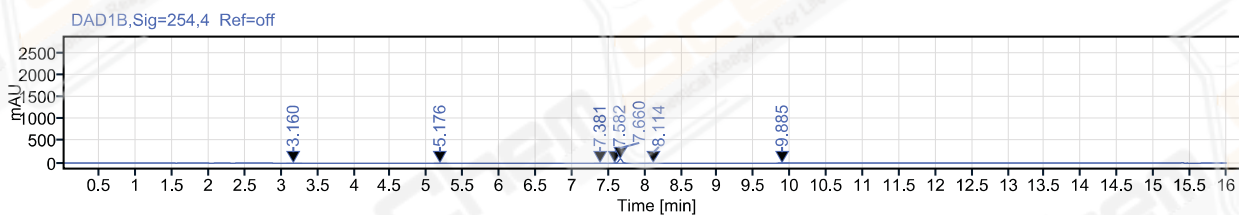
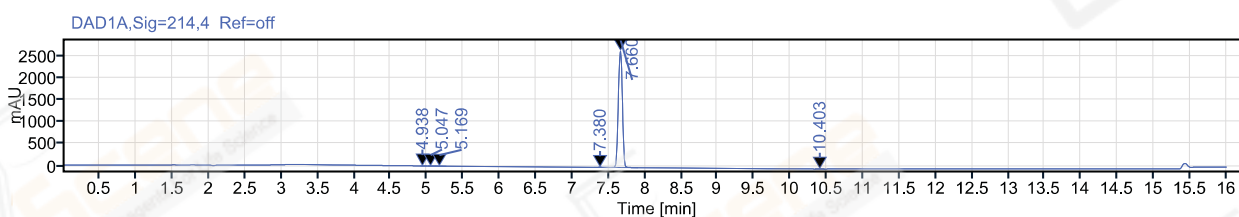


Path /LY-202006/Results/20200623_2.rslt
Sequence Name: 20200623_2 **Project Name:** LY-202006
Sample name: LJC2006233624 **Operator:** jlw_1433
Instrument: LC-03 **Injection date:** 2020-06-24 01:20:11+08:00
Inj. volume: 5.000 **Location:** P1-C4
Acq. method: 10-90A 214NM,C1.amx **Type:** Sample
Catalog No: CS-W008364 A-RP-519 **Data File** 2020-06-24 01-19-17+08-00-27.dx
Manually modified: Manual Integration



Signal: DAD1A,Sig=214,4 Ref=off

RT [min]	Type	Width [min]	Area	Height	Area%	Resolution EP
4.938	MM m	0.05	1.97	0.65	0.02	
5.047	MM m	0.05	1.82	0.64	0.02	1.24
5.169	MM m	0.06	6.08	1.72	0.06	1.11
7.380	MM m	0.05	17.04	5.51	0.17	21.38
7.660	VM m	0.06	10294.17	2667.78	99.70	2.84
10.403	MM m	0.05	4.44	1.30	0.04	27.64
	Sum		10325.52			

Signal: DAD1B,Sig=254,4 Ref=off

RT [min]	Type	Width [min]	Area	Height	Area%	Resolution EP
3.160	MM m	0.09	1.64	0.29	0.48	
5.176	MM m	0.05	3.31	0.99	0.97	12.97
7.381	MM m	0.05	3.65	1.08	1.07	24.48
7.582	MM m	0.04	3.77	1.70	1.10	2.90
7.660	MM m	0.05	325.72	96.39	95.54	1.01
8.114	MM m	0.05	0.60	0.20	0.18	5.09

Single Injection Report



Agilent Technologies

RT [min]	Type	Width [min]	Area	Height	Area%	Resolution EP
9.885	MM m	0.06	2.25	0.61	0.66	19.22
		Sum	340.94			