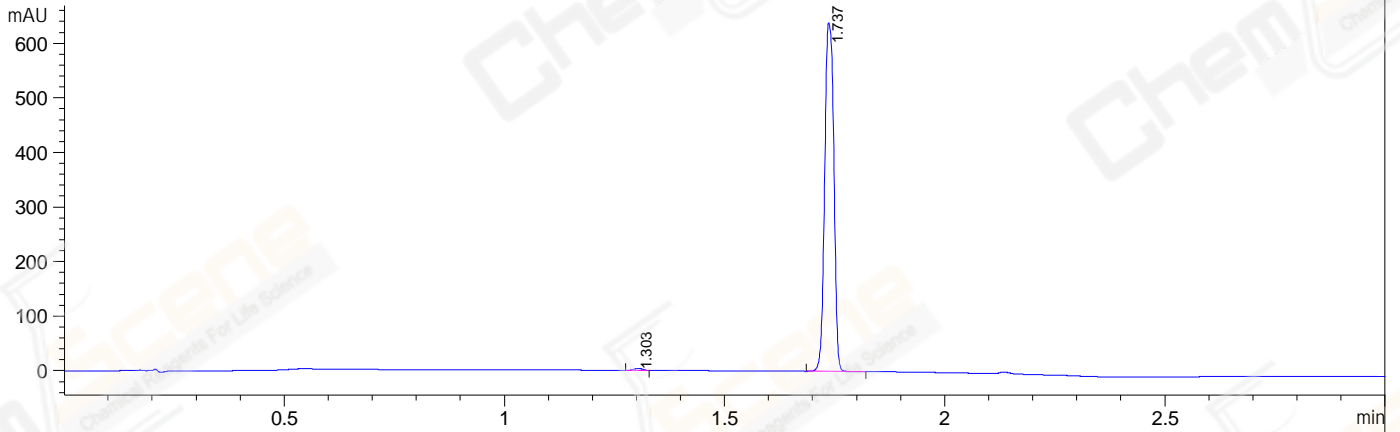


File E:\ChemStation\1\DATA\2023\2023-07\2023-07-24\CPK2023-724-78593-UPLC-MS-10-008817.D
Injection Date : 24-Jul-23, 18:50:56 Tgt Mass(EZX) :
Sample Name : CPK2023-724-78593 Location : P2-C-04
Acq. Operator : LY_2278 Inj : 1
Spec. Reported : MS Integration Inj Volume : 1 ul
Acq. Method : E:\ChemStation\1\Methods\1-POS-UPLC3.0MIN(1.2)(150-1000).M
Analysis Method : E:\CHEMSTATION\1\METHODS\1-POS-UPLC3.0MIN(1.2)(150-1000).M
CAS NO. : 88-58-4 WalkUp method: '1-POS-3MIN' Project: CPK2023
Method Info : Mobile Phase: A: water(0.01%TFA) B:ACN(0.01%TFA)
Gradient: 5% to 95%B within 2.0 min
Flow Rate :1.2ml/min
Column :Shim-pack Scepter C18-120, 3.0*33mm,3um
Oven Temperature : 45C

DAD1 A, Sig=214,4 Ref=off



Integration Results for DAD1 A, Sig=214,4 Ref=off

RetTim	Width	Area	Height	Area%
1.30	0.02	4.35	3.09	0.47
1.74	0.02	920.58	638.04	99.53