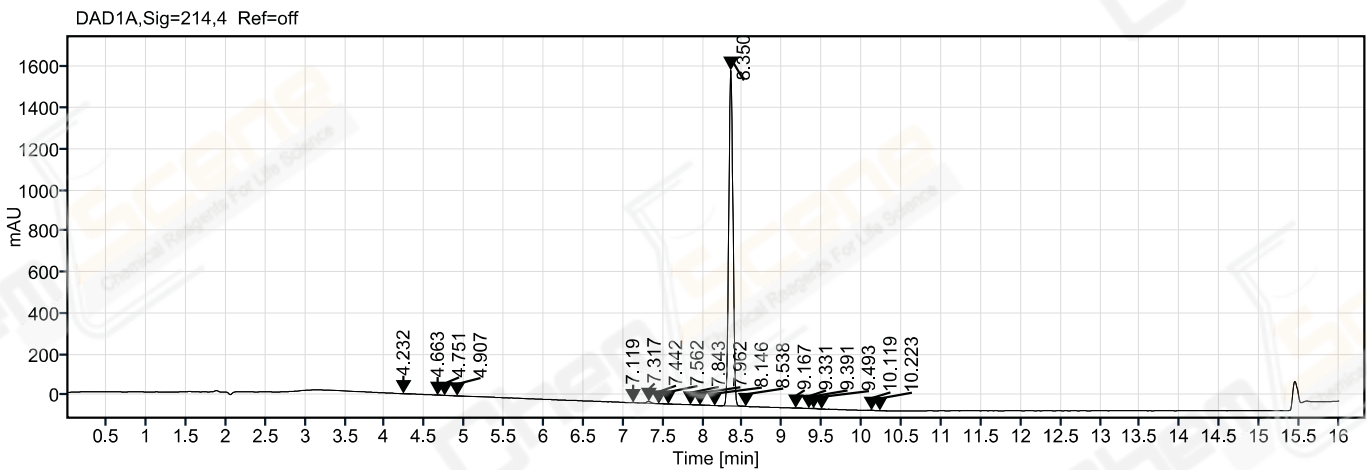


Single Injection Report



Path: /LY-202010/Results/20201029_3.rslt
Sequence Name: 20201029_3 **Project Name:** LY-202010
Sample name: LJC202010290006 **Operator:** ws_1714
Instrument: LC-03 **Injection date:** 2020-10-29 20:21:26+08:00
Inj. volume: 2.000 **Location:** P2-A4
Acq. method: 10-90A 214NM,C2.amx **Type:** Sample
CAS NO.: 15231-91-1 **Data File:** 2020-10-29 20-20-38+08-00-05.dx
Manually modified: Manual Integration



Signal: DAD1A,Sig=214,4 Ref=off

RT [min]	Type	Width [min]	Resolution EP	Area	Height	Area%	Plates EP
4.232	MM m	0.04		1.94	0.66	0.03	
4.663	MM m	0.05	4.64957	2.51	0.73	0.04	
4.751	MM m	0.04	0.90137	1.68	0.59	0.03	
4.907	MM m	0.06	1.83571	2.23	0.54	0.04	
7.119	MM m	0.05	25.13002	4.81	1.33	0.08	
7.317	BB	0.16	2.24340	35.00	10.26	0.57	
7.442	MM m	0.07	1.22314	2.22	0.40	0.04	
7.562	MM m	0.04	1.04812	1.26	0.62	0.02	
7.843	MM m	0.04	2.89036	2.12	0.77	0.03	
7.962	MM m	0.04	1.03858	1.79	0.76	0.03	
8.146	MM m	0.06	1.60863	1.81	0.41	0.03	
8.350	VM m	0.06	2.35614	6042.02	1638.77	98.36	
8.538	MM m	0.04	2.02655	1.29	0.56	0.02	
9.167	BV	0.16	6.99211	10.53	1.91	0.17	

Single Injection Report



Agilent Technologies

RT [min]	Type	Width [min]	Resolution EP	Area	Height	Area%	Plates EP
9.331	VV	0.09	1.33253	8.69	1.95	0.14	
9.391	VB	0.10	0.50476	9.81	2.80	0.16	
9.493	MM m	0.04	1.19255	1.78	0.82	0.03	
10.119	BB	0.11	7.85410	6.81	2.29	0.11	
10.223	MM m	0.06	1.18892	4.32	1.12	0.07	
			Sum	6142.63			