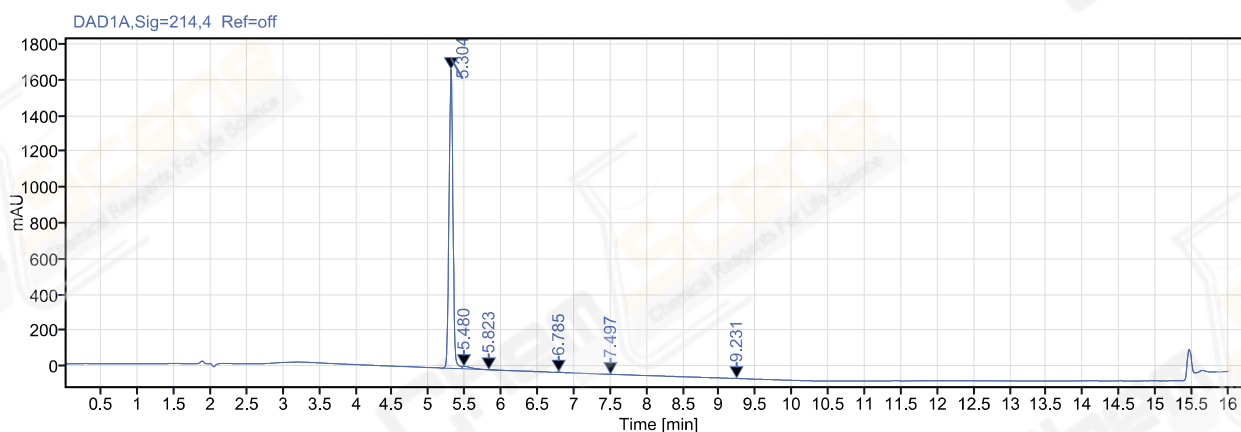


Single Injection Report



Agilent Technologies

Path:	/LY-202011/Results/20201117.rslt	Project Name:	LY-202011
Sequence Name:	20201117	Operator:	ws_1714
Sample name:	LJC202011170010	Injection date:	2020-11-17 18:55:52+08:00
Instrument:	LC-03	Location:	P1-F6
Inj. volume:	2.000	Type:	Sample
Acq. method:	10-90A 214NM,C2.amx	Data File:	2020-11-17 18-55-00+08-00-18.dx
Catalog No:	CS-W019530		
Manually modified:	Manual Integration		



Signal: DAD1A,Sig=214,4 Ref=off

Name	RT [min]	Type	Width [min]	Area	Height	Area%	Resolution EP
	5.304	BM m	0.06	6272.14	1669.39	97.85	
	5.480	MM m	0.15	122.67	13.97	1.91	1.17898
	5.823	MM m	0.07	3.54	0.90	0.06	2.34616
	6.785	BM m	0.05	8.45	2.51	0.13	10.48656
	7.497	MM m	0.05	1.47	0.52	0.02	7.73815
	9.231	MM m	0.06	2.00	0.52	0.03	20.48654
	Sum			6410.26			