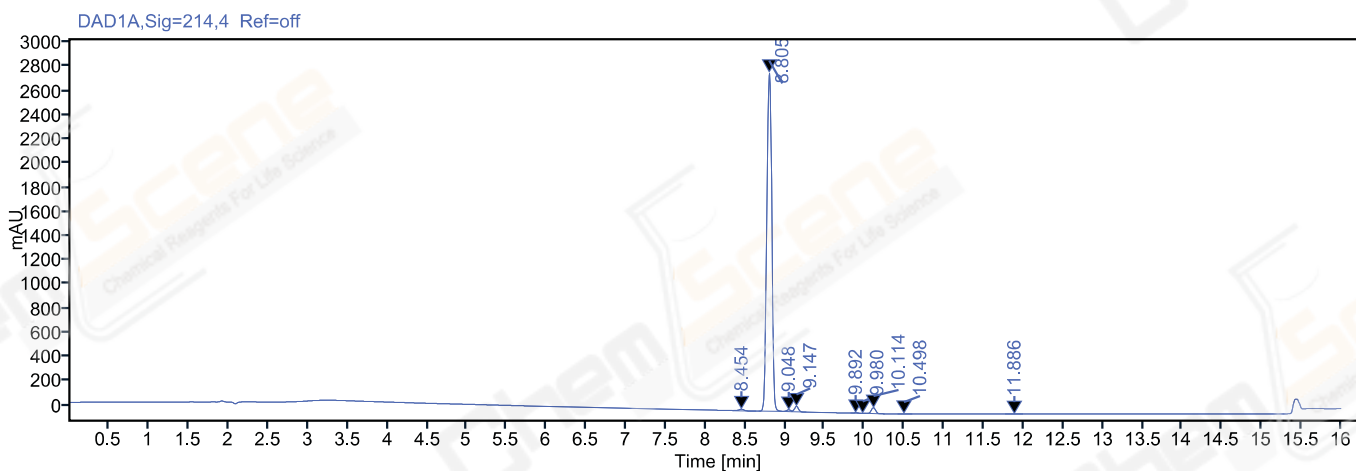


Single Injection Report



Agilent Technologies

Path: /LY-202007/Results/20200713.rslt
Sequence Name: 20200713 **Project Name:** LY-202007
Sample name: LJC2007135122 **Operator:** jlw_1433
Instrument: LC-03 **Injection date:** 2020-07-13 22:43:09+08:00
Inj. volume: 2.000 **Location:** P2-D9
Acq. method: 10-90A 214NM,C2.amx **Type:** Sample
CAS NO.: 778611-64-6 **Data File:** 2020-07-13 22-42-19+08-00-20.dx
Manually modified: Manual Integration



Signal: DAD1A,Sig=214,4 Ref=off

RT [min]	Type	Width [min]	Area	Height	Area%	Resolution EP
8.454	BB	0.29	56.07	13.38	0.44	
8.805	BB	0.31	12277.34	2801.27	96.30	3.08
9.048	BV	0.11	51.10	14.62	0.40	2.20
9.147	VB	0.18	162.35	45.69	1.27	1.03
9.892	BM m	0.06	14.87	4.13	0.12	7.70
9.980	MB m	0.05	1.22	0.41	0.01	1.00
10.114	BB	0.23	181.83	47.90	1.43	1.70
10.498	MM m	0.06	3.13	0.86	0.02	3.86
11.886	MM m	0.07	1.56	0.32	0.01	12.53
	Sum		12749.45			