

CAS NO.: 1806416-26-1

Instrument: LC10418

Inj. volume: 5.000 μ L

Acq. method: 10-80A-12min.amx

Processing method: *LJC202406110468.pmx

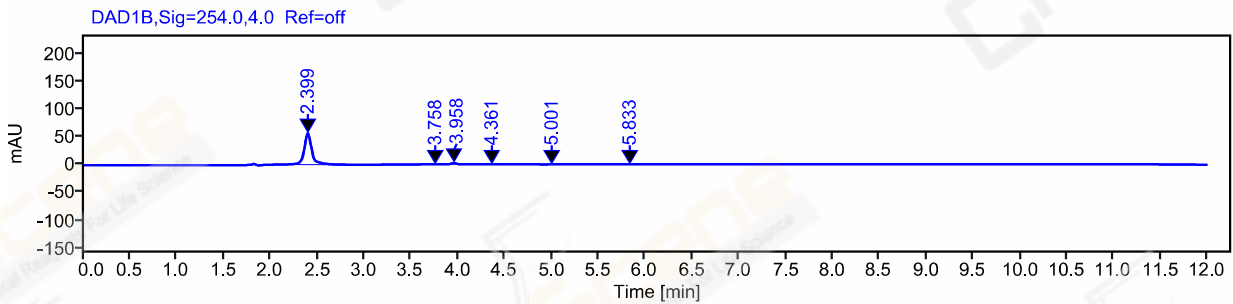
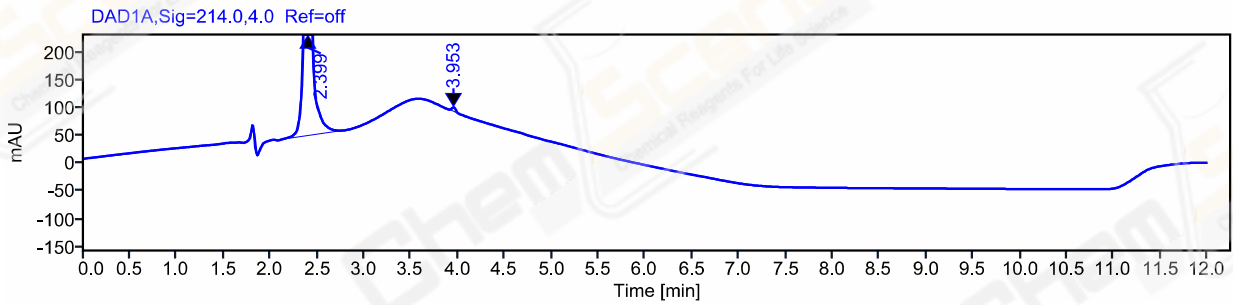
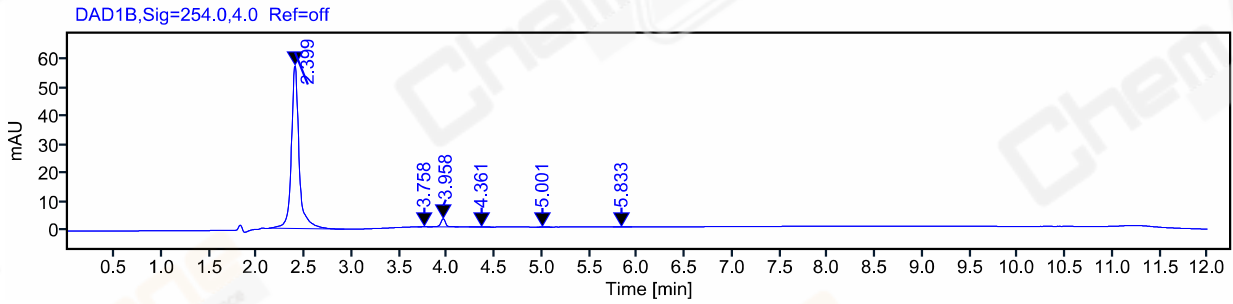
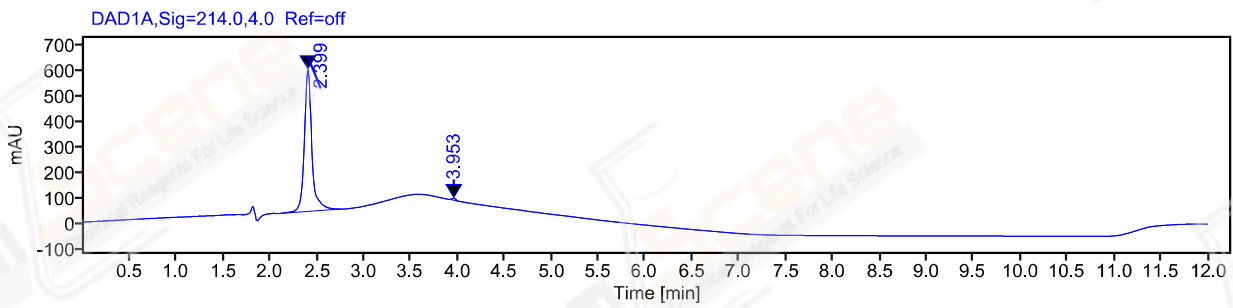
Operator: chen tiankuo (MAS\chentiankuo)

Injection date: 2024-06-12 13:58:13+08:00

Location: P1-A5

Project Name: Le Yan

Date file: /Le Yan/Results/20240612-1.rslt



Signal: DAD1A,Sig=214.0,4.0 Ref=off

| Type | RT [min] | Width | Height | Resolution | Plates | Area | Area% | Name |
|------|----------|-------|--------|------------|--------|---------|-------|------|
| BB | 2.399 | 0.61 | 554.43 | | 5214 | 3110.71 | 99.32 | |
| BBA | 3.953 | 0.10 | 7.40 | 14.8 | 41756 | 21.38 | 0.68 | |
| | | | | | Sum | 3132.09 | | |

Signal: DAD1B,Sig=254.0,4.0 Ref=off

| Type | RT [min] | Width | Height | Resolution | Plates | Area | Area% | Name |
|------|----------|-------|--------|------------|--------|--------|-------|------|
| BB | 2.399 | 0.79 | 57.31 | | 5255 | 329.79 | 96.54 | |
| BV | 3.758 | 0.13 | 0.09 | 10.4 | 13466 | 0.40 | 0.12 | |
| VB | 3.958 | 0.30 | 2.87 | 1.8 | 33140 | 10.53 | 3.08 | |
| BB | 4.361 | 0.26 | 0.08 | 4.4 | 32703 | 0.37 | 0.11 | |
| BB | 5.001 | 0.16 | 0.07 | 6.7 | 43916 | 0.28 | 0.08 | |
| BB | 5.833 | 0.20 | 0.06 | 8.9 | 66061 | 0.24 | 0.07 | |
| | | | | | Sum | 341.60 | | |