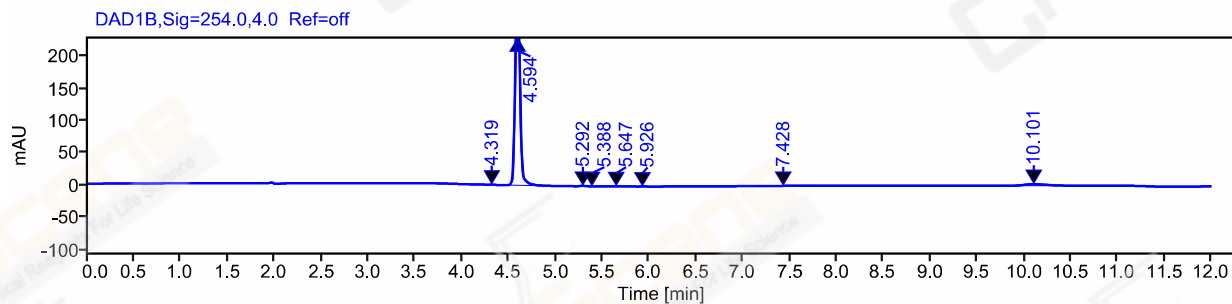
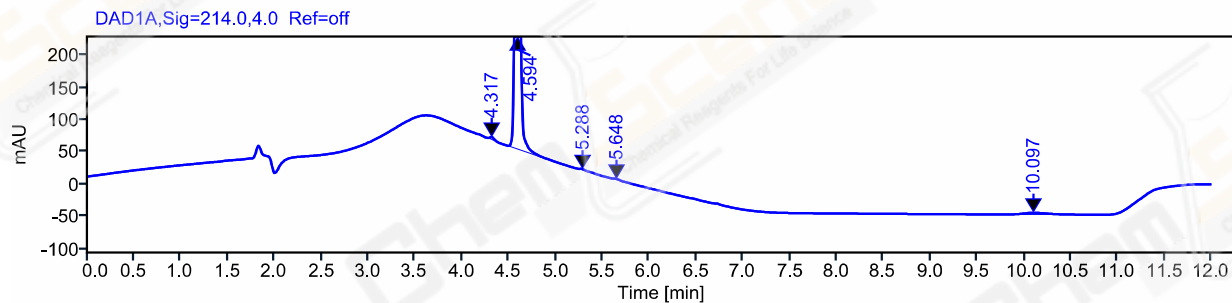
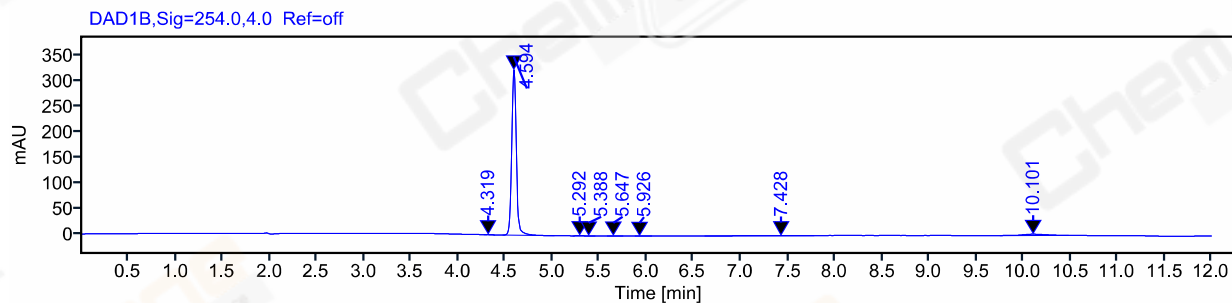
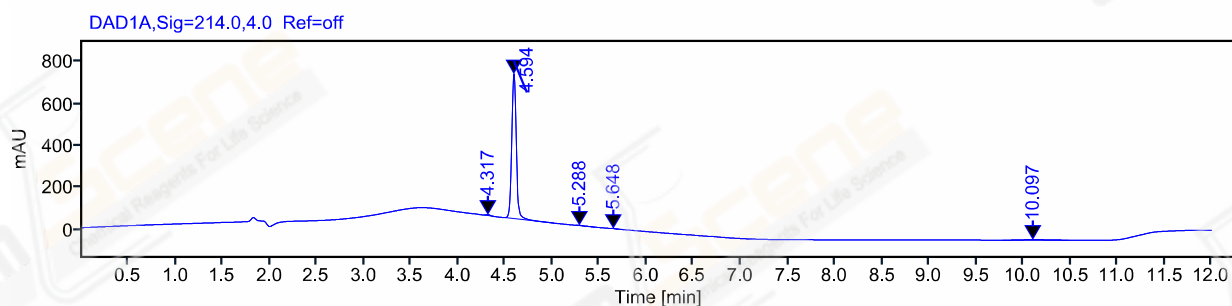


**CAS NO.:** 530-59-6  
**Instrument:** LC10419  
**Inj. volume:** 5.000 µL  
**Acq. method:** 10-80A-12min.amx  
**Processing method:** \*LJC241009K422.pmx

**Operator:** chen tiankuo (MAS\chentiankuo)  
**Injection date:** 2024-10-09 18:12:54+08:00  
**Location:** P2-B2  
**Project Name:** Le Yan  
**Date file:** /Le Yan/Results/20241009-5.rslt



Signal: DAD1A,Sig=214.0,4.0 Ref=off

Type	RT [min]	Width	Height	Resolution	Plates	Area	Area%	Name
BB	4.317	0.11	4.12		45984	12.59	0.53	
BB	4.594	0.52	686.31	3.4	45469	2315.37	97.23	
BB	5.288	0.20	1.46	8.0	62473	6.08	0.26	
BB	5.648	0.07	0.84	5.0	133760	1.91	0.08	
BBA	10.097	0.70	2.72	17.5	8187	45.37	1.91	
					Sum	2381.31		

Signal: DAD1B,Sig=254.0,4.0 Ref=off

Type	RT [min]	Width	Height	Resolution	Plates	Area	Area%	Name
BB	4.319	0.11	0.46		44754	1.38	0.12	
BB	4.594	0.55	323.68	3.2	44710	1104.00	95.45	
BV	5.292	0.15	0.75	7.1	38301	3.01	0.26	
VB	5.388	0.09	0.15	0.9	40121	0.48	0.04	
BB	5.647	0.17	0.38	2.7	69407	1.23	0.11	
BB	5.926	0.18	0.04	3.1	61705	0.16	0.01	
BB	7.428	1.16	0.14			5.11	0.44	
BBA	10.101	0.73	2.47		8163	41.28	3.57	
					Sum	1156.66		