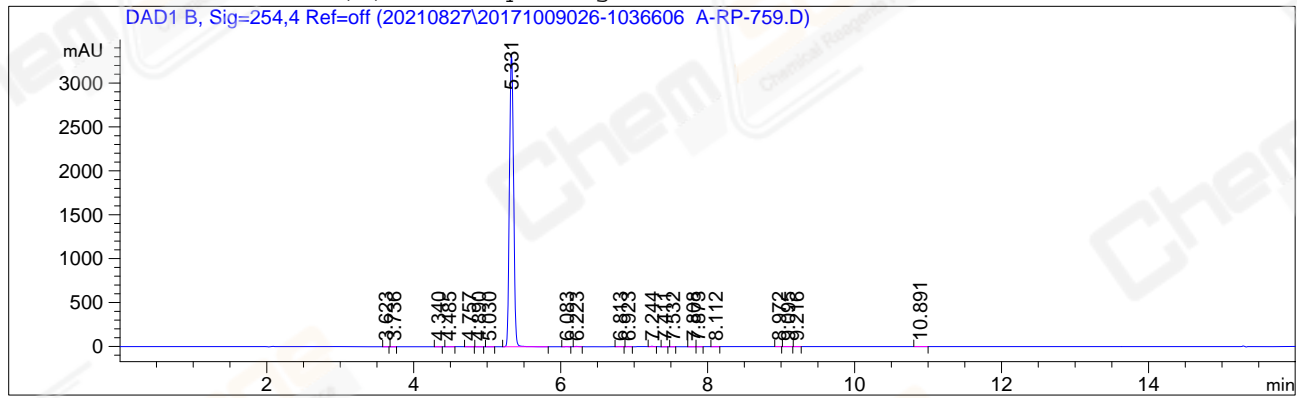


```

=====
Acq. Operator   : zx_2213                      Seq. Line :   36
Acq. Instrument : LC-03                       Location  : P1-F-02
Injection Date  : 8/27/2021 11:42:11 PM       Inj       :    1
                                           Inj Volume: 2.000 µl

Acq. Method     : D:\CHEM32\1\METHODS\10-90A 214NM.M
Last changed    : 8/24/2021 9:57:45 AM by zx_2213
Analysis Method : D:\CHEM32\1\METHODS\10-90A 214NM.M
Last changed    : 8/30/2021 9:41:21 AM by zx_2213
                  (modified after loading)
Additional Info  : Peak(s) manually integrated
  
```



=====
 Area Percent Report
 =====

```

Sorted By      : Signal
Multiplier     : 1.0000
Dilution      : 1.0000
Do not use Multiplier & Dilution Factor with ISTDs
  
```

Signal 1: DAD1 B, Sig=254,4 Ref=off

Peak #	RetTime [min]	Type	Width [min]	Area [mAU*s]	Height [mAU]	Area %
1	3.623	MM	0.0541	8.92217e-1	2.74917e-1	6.834e-3
2	3.736	MM	0.0516	8.80159e-1	2.84397e-1	6.742e-3
3	4.340	MM	0.0557	2.53803	7.59608e-1	0.0194
4	4.485	MM	0.0664	6.52368	1.63626	0.0500
5	4.757	MM	0.0582	4.85015	1.38980	0.0372
6	4.890	MM	0.0796	1.01188	2.11851e-1	7.751e-3
7	5.030	MM	0.0639	1.42049	3.70245e-1	0.0109
8	5.331	MM	0.0648	1.29848e4	3339.44653	99.4576
9	6.083	MM	0.0783	2.98050	6.34136e-1	0.0228
10	6.223	MM	0.0554	15.63457	4.70288	0.1198
11	6.813	MM	0.0508	6.57164	2.15645	0.0503
12	6.923	MM	0.0496	1.89861	6.37768e-1	0.0145
13	7.244	MM	0.0537	14.01730	4.34899	0.1074
14	7.411	MM	0.0609	6.98090e-1	1.91102e-1	5.347e-3
15	7.532	MM	0.0514	7.17312e-1	2.32573e-1	5.494e-3
16	7.808	MF	0.0718	1.75351	4.06831e-1	0.0134
17	7.873	FM	0.0586	1.15165	3.27623e-1	8.821e-3
18	8.112	MM	0.0678	1.24872	3.06825e-1	9.565e-3
19	8.972	MM	0.0522	9.64741e-1	3.08255e-1	7.389e-3
20	9.095	MM	0.0736	2.37109	5.36660e-1	0.0182
21	9.216	MM	0.0643	1.62474	4.21265e-1	0.0124
22	10.891	MM	0.0715	1.06162	2.47514e-1	8.132e-3

Totals : 1.30556e4 3359.83249

*** End of Report ***