

CAS NO. : 199110-64-0

```

=====
Acq. Operator   : YXH                               Seq. Line :   12
Acq. Instrument : HPLC-12                           Location  : Vial 10
Injection Date  : 5/29/2019 21:02:44                Inj       :    1
                                                    Inj Volume: 5.0 µl
Acq. Method     : D:\CHEM32\1\DATA\20190529\20190527 2019-05-29 17-07-20\10-90A 214NM.M
Last changed    : 5/29/2019 17:28:30 by YXH
                (modified after loading)
Analysis Method : D:\CHEM32\1\METHOD\10-90B.20MIN.M
Last changed    : 5/30/2019 10:01:19 by YXH

```

A-RP-301

Additional Info : Peak(s) manually integrated

```

=====
Instrument Conditions :      At Start          At Stop
Column Temp. (left)  :      30.0              30.0 °C
Column Temp. (right) :      30.0              30.0 °C
Pressure              :      206.4            211.7 bar
Flow                  :      1.000            1.000 ml/min

```

```

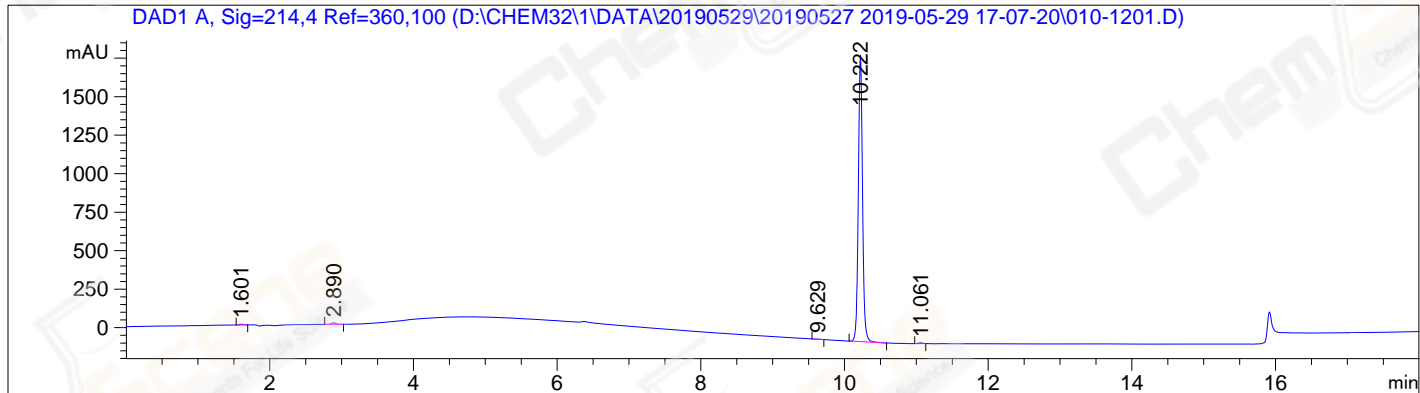
Detector Lamp Burn Times: Current On-Time  Accumulated On-Time
DAD 1, UV Lamp           :      4.31          2402.8 h
DAD 1, Visible Lamp      :      OFF           12.0 h

```

```

Solvent Description      :
PMP1 , Solvent A         : 0.05%TFA
PMP1 , Solvent B         : ACN

```



```

=====
                          Area Percent Report
=====

```

```

Sorted By           :      Signal
Multiplier:         :      1.0000
Dilution:           :      1.0000
Use Multiplier & Dilution Factor with ISTDs

```

Signal 1: DAD1 A, Sig=214,4 Ref=360,100

Peak #	RetTime [min]	Type	Width [min]	Area [mAU*s]	Height [mAU]	Area %
1	1.601	MM R	0.0624	17.30453	4.62063	0.2268
2	2.890	MM R	0.0729	42.11621	9.62781	0.5519
3	9.629	MM R	0.0693	9.58376	2.30417	0.1256
4	10.222	MM R	0.0674	7542.49609	1866.43250	98.8430
5	11.061	MM R	0.0655	19.28732	4.91044	0.2528

Peak #	RetTime [min]	Type	Width [min]	Area [mAU*s]	Height [mAU]	Area %
Totals :				7630.78792	1887.89554	