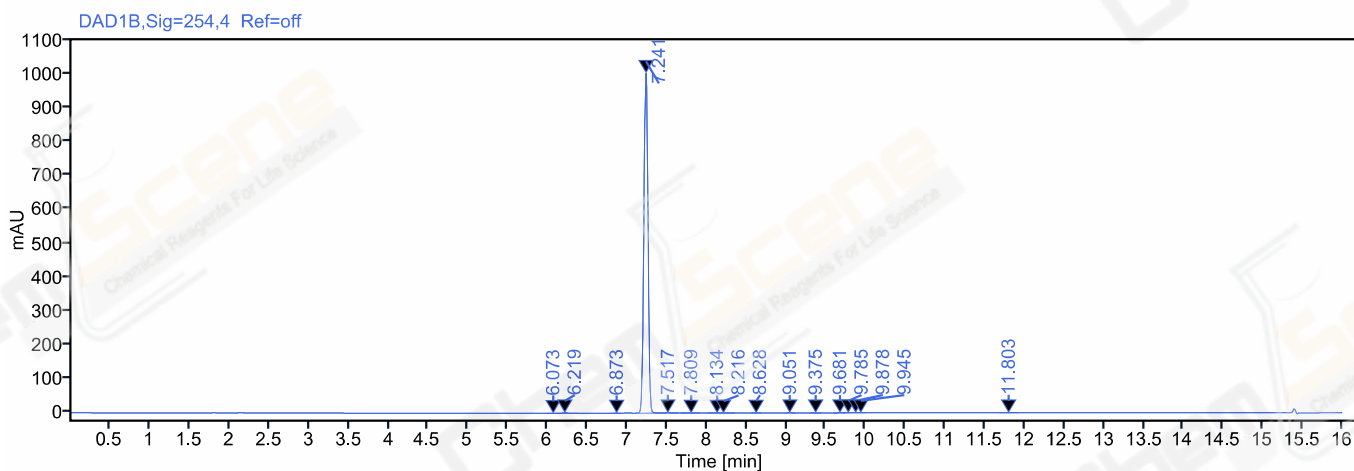


Single Injection Report



Path: /LY-202007/Results/20200722.rslt
Sequence Name: 20200722 **Project Name:** LY-202007
Sample name: LJC2007215631 **Operator:** ws_1714
Instrument: LC-03 **Injection date:** 2020-07-22 13:23:55+08:00
Inj. volume: 2.000 **Location:** P2-E7
Acq. method: 10-90A 214NM,C2.amx **Type:** Sample
CAS NO.: 130-15-4 **Data File:** 2020-07-22 13-23-06+08-00-10.dx
Manually modified: Manual Integration



Signal: DAD1B,Sig=254,4 Ref=off

RT [min]	Type	Width [min]	Area	Height	Area%	Resolution EP
6.073	MM m	0.06	0.58	0.16	0.02	
6.219	MM m	0.05	5.03	1.49	0.14	1.58
6.873	MM m	0.06	0.55	0.15	0.02	6.79
7.241	MM m	0.06	3531.53	1003.69	99.46	3.73
7.517	MM m	0.05	5.21	1.45	0.15	2.87
7.809	MM m	0.05	1.04	0.32	0.03	3.01
8.134	MM m	0.07	0.76	0.17	0.02	2.99
8.216	MM m	0.07	0.88	0.17	0.02	0.59
8.628	MM m	0.06	0.32	0.09	0.01	3.34
9.051	MM m	0.05	1.96	0.62	0.06	4.57
9.375	MM m	0.07	0.55	0.13	0.02	3.29
9.681	MM m	0.07	0.42	0.08	0.01	2.63
9.785	MM m	0.06	0.62	0.16	0.02	0.71
9.878	MM m	0.05	0.48	0.13	0.01	0.76

Single Injection Report



Agilent Technologies

RT [min]	Type	Width [min]	Area	Height	Area%	Resolution EP
9.945	MM m	0.06	0.65	0.18	0.02	0.70
11.803	MM m	0.07	0.31	0.07	0.01	15.93
		Sum	3550.88			