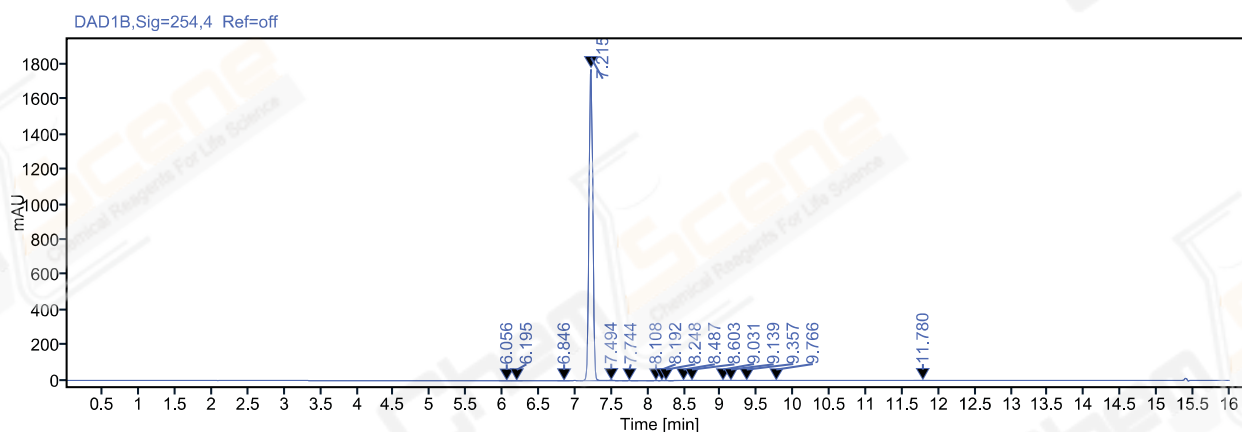


Single Injection Report



Agilent Technologies

Path: /LY-202007/Results/20200728.rslt
Sequence Name: 20200728
Sample name: LJC2007275880
Instrument: LC-03
Inj. volume: 2.000
Acq. method: 10-90A 214NM,C2.amx
Catalog No: CS-W016206
Project Name: LY-202007
Operator: ws_1714
Injection date: 2020-07-28 10:17:52+08:00
Location: P1-C4
Type: Sample
Data File: 2020-07-28 10-16-59+08-00-03.dx
Manually modified: Manual Integration



Signal: DAD1B,Sig=254,4 Ref=off

RT [min]	Type	Width [min]	Area	Height	Area%	Resolution	EP
6.056	MM m	0.05	0.42	0.12	0.01		
6.195	MM m	0.05	1.57	0.46	0.02		1.53
6.846	MM m	0.06	0.73	0.20	0.01		6.81
7.215	VM m	0.06	6368.43	1779.66	99.63		3.77
7.494	MM m	0.06	10.20	2.65	0.16		2.88
7.744	MM m	0.09	1.50	0.25	0.02		2.04
8.108	MM m	0.07	0.74	0.16	0.01		2.70
8.192	MM m	0.05	0.43	0.11	0.01		0.64
8.248	MM m	0.05	0.38	0.12	0.01		0.55
8.487	MM m	0.11	1.14	0.13	0.02		1.40
8.603	MM m	0.07	0.95	0.22	0.01		0.68
9.031	MM m	0.05	2.26	0.70	0.04		4.21
9.139	MM m	0.07	0.43	0.10	0.01		0.95
9.357	MM m	0.07	1.38	0.29	0.02		1.71

Single Injection Report



Agilent Technologies

RT [min]	Type	Width [min]	Area	Height	Area%	Resolution EP
9.766	MM m	0.05	0.73	0.23	0.01	3.86
11.780	MM m	0.08	0.58	0.11	0.01	17.96
		Sum	6391.87			