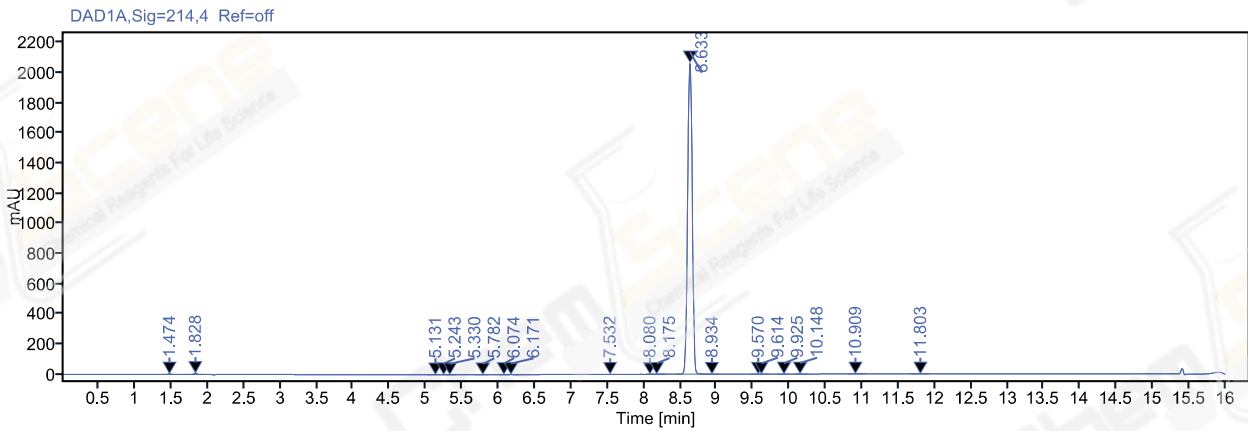


Single Injection Report



Path: /LY-202007/Results/20200730.rslt
Sequence Name: 20200730
Sample name: LJC2007306062
Instrument: LC-03
Inj. volume: 5.000
Acq. method: 10-90A 214NM,C2.amx
CAS NO.: 28705-46-6
Manually modified: Manual Integration

Project Name: LY-202007
Operator: jlw_1433
Injection date: 2020-07-30 20:33:16+08:00
Location: P2-E9
Type: Sample
Data File: 2020-07-30 20-32-25+08-00-20.dx



Signal: DAD1A,Sig=214,4 Ref=off

RT [min]	Type	Width [min]	Area	Height	Area%	Resolution	EP
1.474	MM m	0.05	15.23	5.14	0.16		
1.828	MM m	0.05	27.64	8.37	0.30		4.19
5.131	MM m	0.05	1.80	0.65	0.02		38.83
5.243	MM m	0.05	2.26	0.81	0.02		1.44
5.330	MM m	0.04	0.64	0.30	0.01		1.19
5.782	MM m	0.05	0.65	0.19	0.01		5.76
6.074	MM m	0.05	3.13	0.98	0.03		3.25
6.171	MM m	0.05	3.86	1.19	0.04		1.14
7.532	MM m	0.06	1.31	0.35	0.01		14.34
8.080	MM m	0.05	1.78	0.50	0.02		5.43
8.175	MM m	0.06	2.04	0.52	0.02		1.00
8.633	BM m	0.07	9285.98	2065.50	99.24		4.04
8.934	MM m	0.09	1.68	0.28	0.02		1.86
9.570	MM m	0.06	0.73	0.21	0.01		4.58

Single Injection Report



Agilent Technologies

RT [min]	Type	Width [min]	Area	Height	Area%	Resolution	EP
9.614	MM m	0.06	1.22	0.32	0.01		0.41
9.925	MM m	0.05	0.85	0.26	0.01		2.92
10.148	MM m	0.06	3.59	0.97	0.04		2.36
10.909	MM m	0.09	1.00	0.17	0.01		6.07
11.803	MM m	0.09	1.91	0.34	0.02		6.26
		Sum	9357.30				