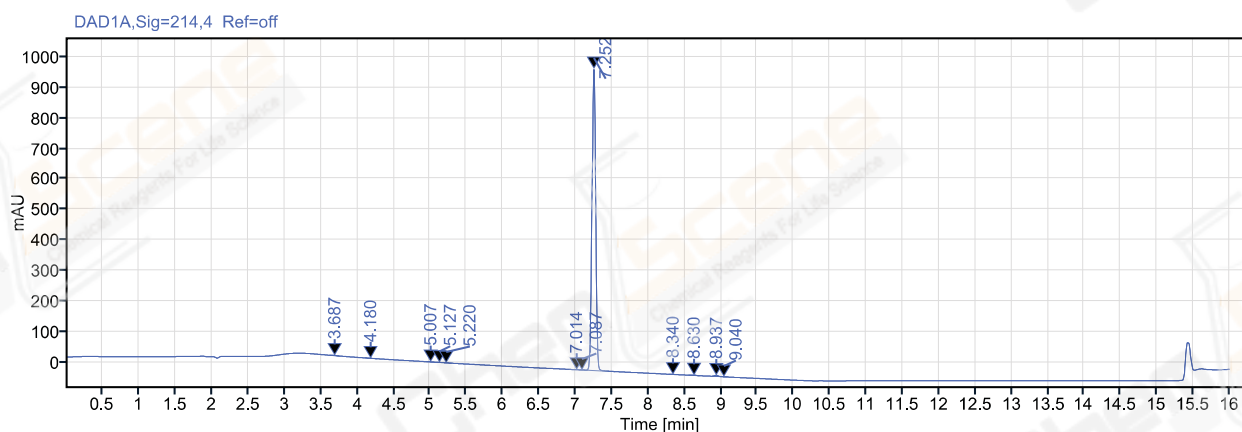


Catalog No: CS-0033199
 Path: /LY-202008/Results/20200805.rslt
 Sequence Name: 20200805
 Sample name: LJC2008056289
 Instrument: LC-03
 Inj. volume: 2.000
 Acq. method: 10-90A 214NM,C2.amx
 Processing method: *GC_LC Area Percent_DefaultMethod.pm
 Manually modified: Manual Integration

Project Name: LY-202008
 Operator: ws_1714
 Injection date: 2020-08-05 20:10:19+08:00
 Location: P2-D1
 Type: Sample
 Data File: 2020-08-05 20-09-28+08-00-13.dx



Signal: DAD1A,Sig=214,4 Ref=off

RT [min]	Type	Width [min]	Area	Height	Area%	Resolution	EP
3.687	MM m	0.05	3.65	1.16	0.10		
4.180	MM m	0.05	0.90	0.32	0.03		3.64
5.007	MM m	0.06	1.44	0.39	0.04		7.15
5.127	MM m	0.07	1.99	0.47	0.06		1.04
5.220	MM m	0.07	0.79	0.20	0.02		1.01
7.014	MM m	0.05	0.99	0.31	0.03		19.75
7.087	MM m	0.05	1.24	0.43	0.04		0.74
7.252	BB	0.40	3493.38	990.61	99.15		1.93
8.340	MM m	0.06	0.77	0.22	0.02		10.57
8.630	MM m	0.06	4.60	1.29	0.13		2.63
8.937	BM m	0.05	13.25	3.86	0.38		2.95
9.040	MM m	0.05	0.29	0.11	0.01		1.49
	Sum		3523.31				