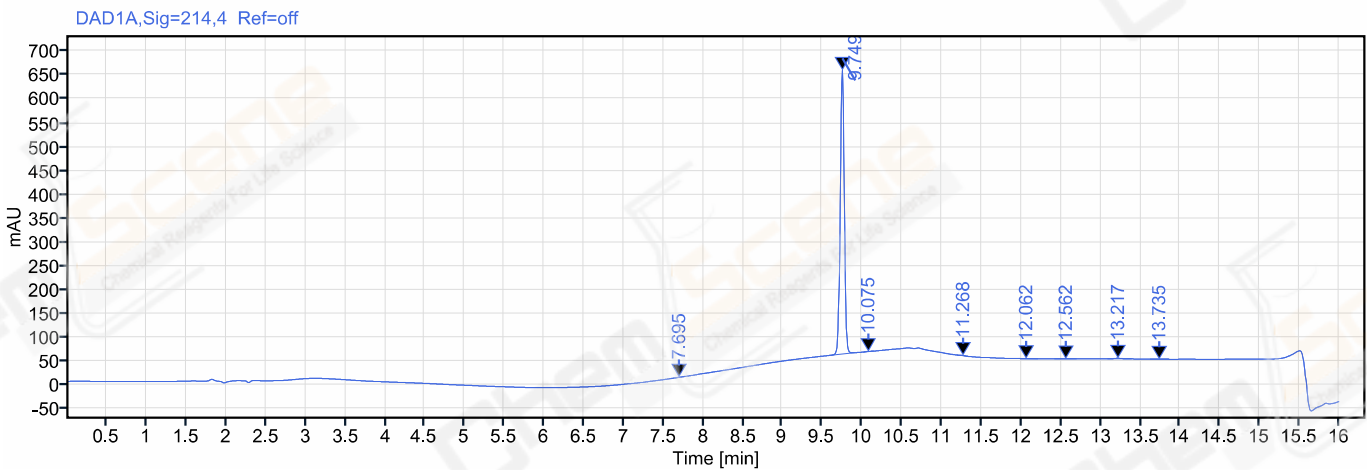


Single Injection Report



Agilent Technologies

Path: /LY-202008/Results/20200812.rslt
Sequence Name: 20200812 **Project Name:** LY-202008
Sample name: LJC2008126639 **Operator:** ws_1714
Instrument: LC-03 **Injection date:** 2020-08-13 01:13:40+08:00
Inj. volume: 2.000 **Location:** P2-D10
Acq. method: 10-90A 214NM,C2.amx **Type:** Sample
CAS NO.: 28705-46-6 **Data File:** 2020-08-13 01-12-50+08-00-22.dx
Manually modified: Manual Integration



Signal: DAD1A,Sig=214,4 Ref=off

RT [min]	Type	Width [min]	Area	Height	Area%	Resolution	EP
7.695	MM m	0.05	0.64	0.20	0.03		
9.749	MM m	0.06	2158.79	594.26	99.31	23.95	
10.075	MM m	0.07	1.76	0.43	0.08	2.93	
11.268	MM m	0.06	2.36	0.61	0.11	8.77	
12.062	MM m	0.04	0.17	0.07	0.01	5.24	
12.562	MM m	0.08	0.74	0.12	0.03	3.40	
13.217	MM m	0.11	8.54	1.24	0.39	4.14	
13.735	MM m	0.12	0.85	0.12	0.04	2.45	
	Sum		2173.85				