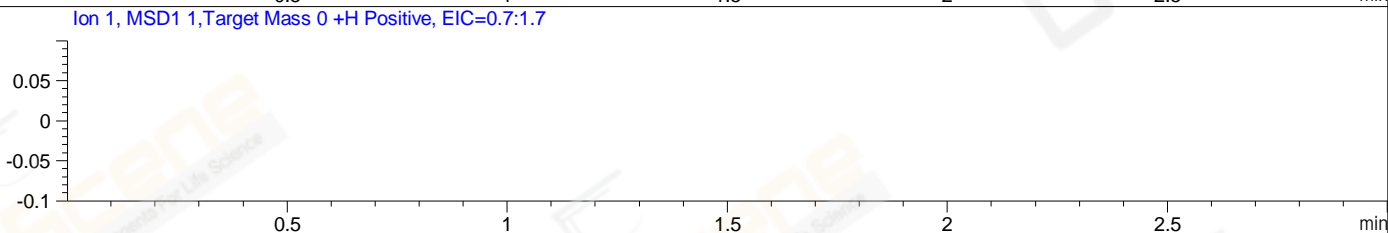
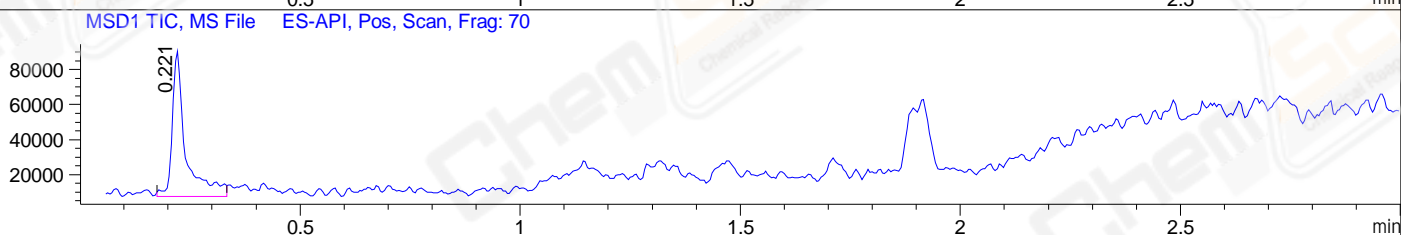
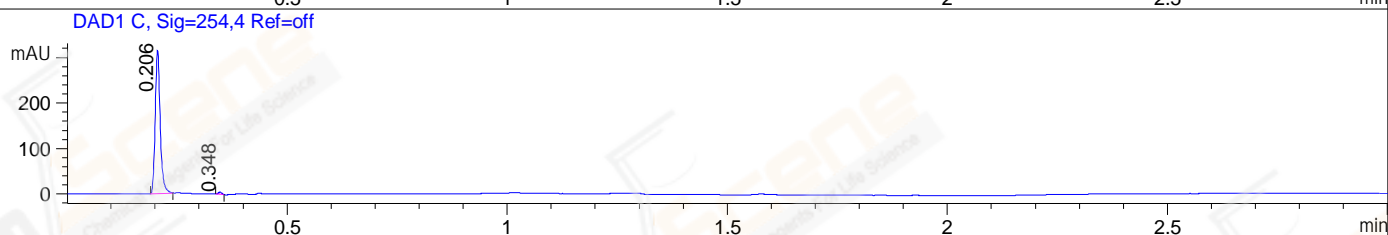
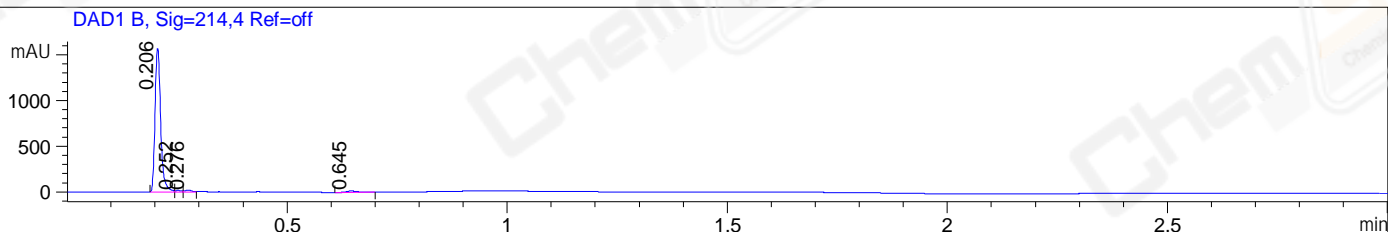


File ..1\DATA\2021\20210730\1513\LJC202107130167.D Tgt Mass (CHM):
Injection Date : 30 Jul 21 1:38 pm +0800 Seq. Line : 55
Sample Name : LJC202107130167 Location : P2-E-03
Acq. Operator : myh_2380 Inj : 1
Spec. Reported : MS Integration Inj Volume : 0.3 ul
Acq. Method : D:\Chem32\1\data\2021\20210730\1513\1-POS-3MIN.M
Analysis Method : D:\CHEM32\1\DATA\2021\20210730\1513\1-POS-3MIN.M
CAS NO. : 4506-66-5
Method Info : Mobile Phase: A: water(0.01%TFA) B:ACN(0.01%TFA)
Gradient: 5% to 95%B within 1.3 min
Flow Rate :1.8ml/min
Column :SunFire C18, 4.6*50mm,3.5um A-RP-698



Integration Results for DAD1 B, Sig=214,4 Ref=off

RetTim	Width	Area	Height	Area%	MS(+)
0.21	0.01	1414.03	1571.13	95.09	137
0.25	0.01	15.46	15.92	1.04	137
0.28	0.02	22.53	20.24	1.52	137
0.65	0.03	35.00	16.87	2.35	ND

Integration Results for DAD1 C, Sig=254,4 Ref=off

RetTim	Width	Area	Height	Area%	MS(+)
0.21	0.01	250.77	315.18	99.02	137
0.35	0.01	2.49	4.71	0.98	137

Integration Results for MSD1 TIC, MS File

RetTim	Width	Area	Height	Area%	MS(+)
0.22	0.03	177387.69	83351.30	100.00	137