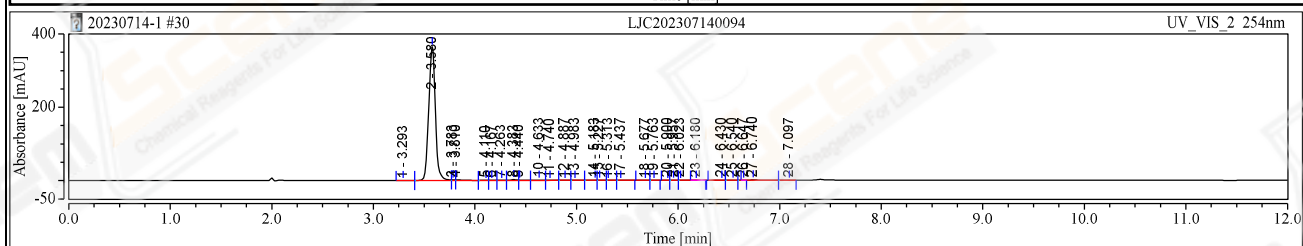
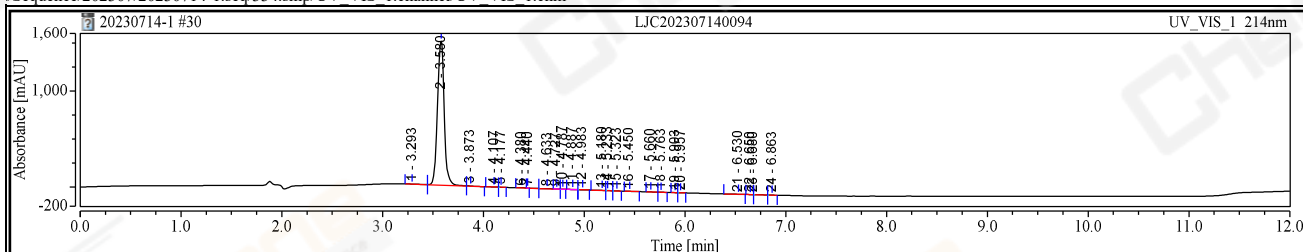


Chromatogram and Results

Sample ID: LJC202307140094	CAS NO.: 31170-78-2
Batch No:	Channel:
Vial Number: BB3	Wavelength: 214.0
Injection Type: Unknown	Injection Volume: 5.00
Instrument: LC10410	Injection Time: 15/07/2023 00:14
Instrument Method: 10-80A-12min(LP-HPLC)	InstMeth.creation: 15/04/2022 17:33
Processing Method: LJC202307140094	Last update_time: 17/07/2023 12:16
seq.creation_operator: Azhangl	
/Sequence/202307/20230714-1.seq/334.smp/UV_VIS_1.channel/UV_VIS_1.chm	



No.	Retention Time min	Area mAU*min	Height mAU	Plates (USP)	Resolution (USP)	Asymmetry (USP)	Rel.Area %	Peak Name
1	3.293	0.113	0.594	n.a.	n.a.	n.a.	0.097	
2	3.580	115.243	1499.176	14937	0.33	1.04	99.153	
3	3.873	0.151	2.067	86	0.26	n.a.	0.130	
4	4.107	0.058	0.960	30278	0.33	n.a.	0.050	
5	4.177	0.019	0.426	2584	1.00	n.a.	0.017	
6	4.380	0.223	3.580	51310	2.68	n.a.	0.192	
7	4.440	0.000	0.028	n.a.	n.a.	n.a.	0.000	
8	4.633	0.138	1.206	27678	3.57	n.a.	0.118	
9	4.727	0.011	0.254	n.a.	n.a.	n.a.	0.009	
10	4.787	0.005	0.141	n.a.	n.a.	n.a.	0.004	
11	4.887	0.020	0.453	n.a.	n.a.	n.a.	0.018	
12	4.983	0.019	0.350	55574	2.06	n.a.	0.016	
13	5.180	0.038	0.666	38080	0.11	n.a.	0.033	
14	5.233	0.022	0.474	559	0.19	n.a.	0.019	
15	5.323	0.008	0.160	68338	1.17	n.a.	0.007	
16	5.450	0.007	0.068	25829	1.78	1.40	0.006	
17	5.660	0.005	0.083	51573	1.23	n.a.	0.005	
18	5.763	0.006	0.126	114596	0.80	1.35	0.005	
19	5.903	0.006	0.158	7025	0.30	n.a.	0.005	
20	5.957	0.009	0.216	96798	6.20	n.a.	0.008	
21	6.530	0.027	0.354	58041	1.37	0.71	0.023	
22	6.650	0.005	0.120	161799	0.35	n.a.	0.004	
23	6.680	0.081	0.062	64806	1.85	n.a.	0.070	
24	6.863	0.015	0.267	86083	n.a.	n.a.	0.013	
Total:		116.228	1511.988		25.59			

No.	Retention Time min	Area mAU*min	Height mAU	Plates (USP)	Resolution (USP)	Asymmetry (USP)	Rel.Area %	Peak Name
1	3.293	0.006	0.034	137150	3.79	n.a.	0.023	
2	3.580	27.617	364.591	15341	3.14	1.04	97.061	
3	3.783	0.055	1.422	1175518	0.05	n.a.	0.192	
4	3.810	0.113	1.195	170	0.44	n.a.	0.397	
5	4.110	0.026	0.363	8093	0.32	n.a.	0.090	
6	4.167	0.025	0.383	9179	0.36	n.a.	0.089	
7	4.263	0.020	0.231	2189	0.54	n.a.	0.070	
8	4.383	0.133	2.410	44609	1.07	n.a.	0.469	
9	4.440	0.047	0.656	619325	2.69	n.a.	0.164	
10	4.633	0.065	0.738	23408	0.57	n.a.	0.228	
11	4.740	0.046	0.401	5526	0.71	n.a.	0.162	
12	4.887	0.035	0.398	15649	0.70	n.a.	0.124	
13	4.983	0.031	0.369	27122	1.37	n.a.	0.108	
14	5.183	0.030	0.443	14676	0.26	n.a.	0.104	

15	5.227	0.031	0.481	16471	0.59	n.a.	0.108
16	5.313	0.014	0.187	25914	0.69	n.a.	0.051
17	5.437	0.011	0.105	9359	1.38	n.a.	0.039
18	5.677	0.004	0.053	33401	0.88	n.a.	0.015
19	5.763	0.006	0.122	98838	2.51	n.a.	0.020
20	5.900	0.005	0.130	442256	0.87	n.a.	0.016
21	5.957	0.019	0.327	62463	1.20	n.a.	0.065
22	6.023	0.009	0.118	2292954	7.75	n.a.	0.032
23	6.180	0.003	0.030	n.a.	n.a.	n.a.	0.009
24	6.430	0.003	0.040	83554	1.10	n.a.	0.010
25	6.540	0.005	0.068	56049	1.84	n.a.	0.016
26	6.647	0.001	0.022	n.a.	n.a.	n.a.	0.002
27	6.740	0.090	0.970	63930	3.78	1.46	0.317
28	7.097	0.005	0.036	119504	n.a.	n.a.	0.016
Total:		28.453	376.324		38.59		