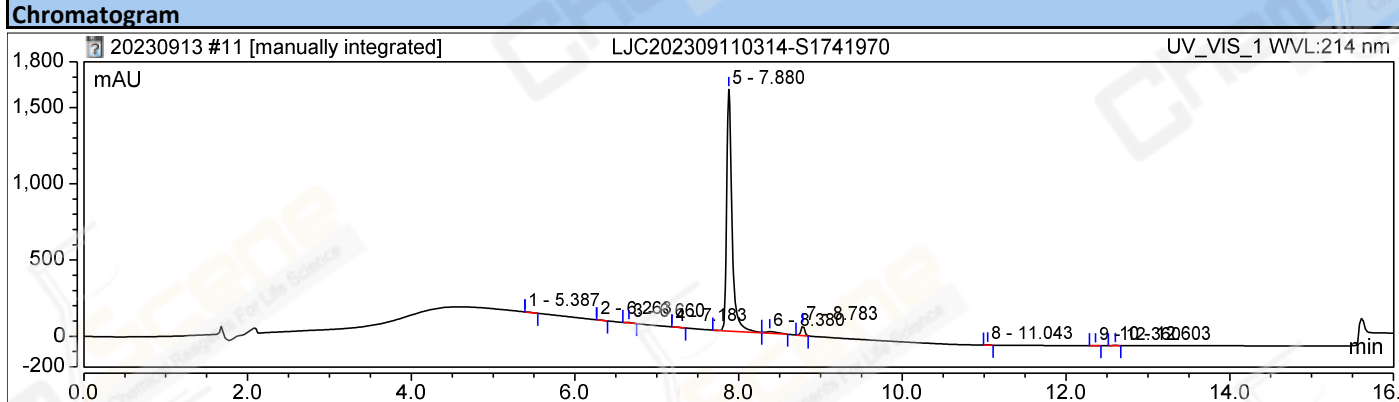


Chromatogram and Results

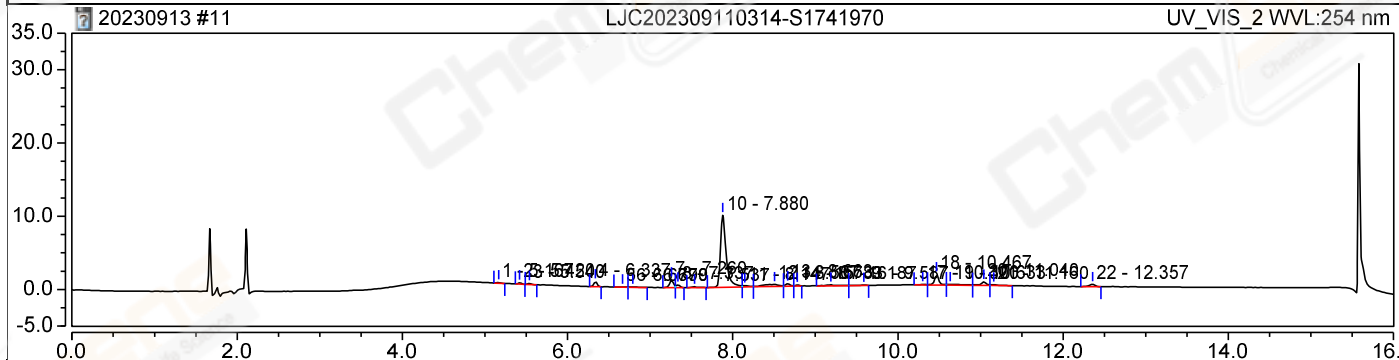
Injection Details		
Injection Name:	LJC202309110314-S1741970	Run Time (min): 16.00
Vial Number:	RA8	Injection Volume: 5.00
Injection Type:	Unknown	Channel: UV_VIS_1
CAS NO.:	1361380-69-9 A-RP-1059-1	Wavelength: 214
Instrument Method:	10-90A_1-2 A C	Bandwidth: 4
Processing Method:	3D Quantitative-1	Dilution Factor: n.a.
Injection Date/Time:	13/Sep/23 14:13	Sample Weight: n.a.
seq.creation_operator	YLL4430	seq.update_operator YLL4430
instMeth.creation_operator	YLL4430	rdf.update_operator YLL4430



Integration Results

No.	Peak Name	Retention Time min	Area mAU*min	Height mAU	Relative Area %	Relative Height %	Amount n.a.
1		5.387	0.026	0.000	0.02	0.00	n.a.
2		6.263	0.078	0.000	0.06	0.00	n.a.
3		6.660	0.251	4.295	0.20	0.26	n.a.
4		7.183	0.072	0.000	0.06	0.00	n.a.
5		7.880	119.858	1585.448	95.49	94.93	n.a.
6		8.380	1.752	10.383	1.40	0.62	n.a.
7		8.783	3.240	66.085	2.58	3.96	n.a.
8		11.043	0.092	1.796	0.07	0.11	n.a.
9		12.360	0.028	0.415	0.02	0.02	n.a.
10		12.603	0.127	1.736	0.10	0.10	n.a.

Total:	125.524	1670.159	100.00	100.00
---------------	----------------	-----------------	---------------	---------------



Integration Results

No.	Peak Name	Retention Time min	Area mAU*min	Height mAU	Relative Area %	Relative Height %	Amount n.a.
UV_VIS_2	UV_VIS_2	UV_VIS_2	UV_VIS_2	UV_VIS_2	UV_VIS_2	UV_VIS_2	UV_VIS_2

1		5.167	0.005	0.103	0.38	0.63	n.a.
2		5.420	0.009	0.200	0.68	1.22	n.a.
3		5.540	0.008	0.176	0.63	1.08	n.a.
4		6.337	0.033	0.709	2.61	4.33	n.a.
5		6.667	0.004	0.046	0.29	0.28	n.a.
6		6.790	0.006	0.047	0.45	0.29	n.a.
7		7.260	0.057	1.073	4.51	6.56	n.a.
8		7.337	0.019	0.381	1.52	2.33	n.a.
9		7.537	0.008	0.103	0.64	0.63	n.a.
10		7.880	0.788	9.838	62.65	60.16	n.a.
11		8.147	0.015	0.177	1.16	1.08	n.a.
12		8.507	0.059	0.267	4.73	1.63	n.a.
13		8.663	0.021	0.348	1.66	2.13	n.a.
14		8.783	0.007	0.132	0.52	0.81	n.a.
15		9.187	0.017	0.142	1.36	0.87	n.a.
16		9.587	0.006	0.059	0.46	0.36	n.a.
17		10.300	0.007	0.086	0.53	0.52	n.a.
18		10.467	0.088	1.432	7.00	8.75	n.a.
19		10.633	0.028	0.119	2.25	0.73	n.a.
20		11.040	0.038	0.474	3.05	2.90	n.a.
21		11.160	0.012	0.126	0.98	0.77	n.a.
22		12.357	0.024	0.315	1.95	1.93	n.a.
Total:			1.257	16.354	100.00	100.00	